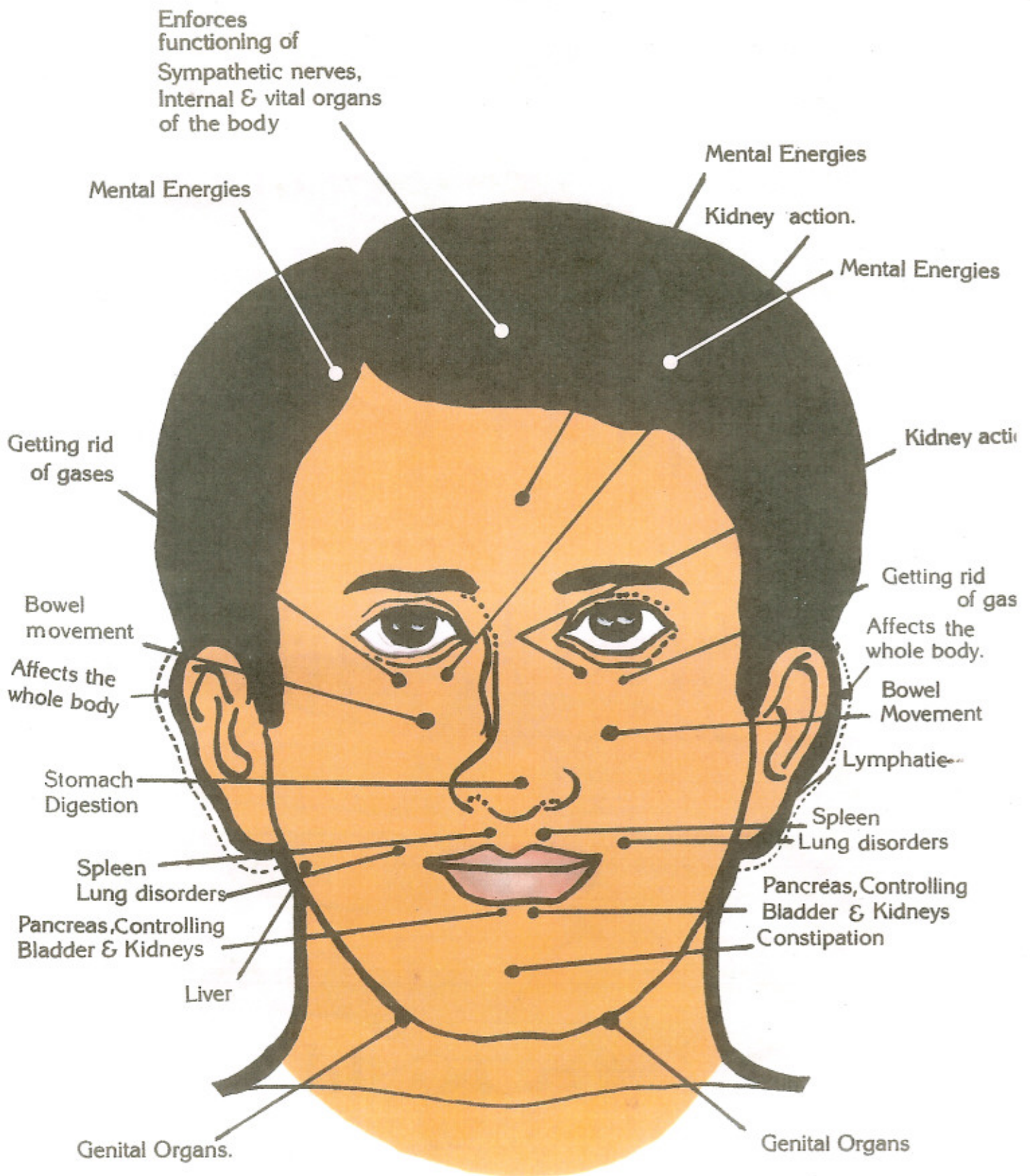
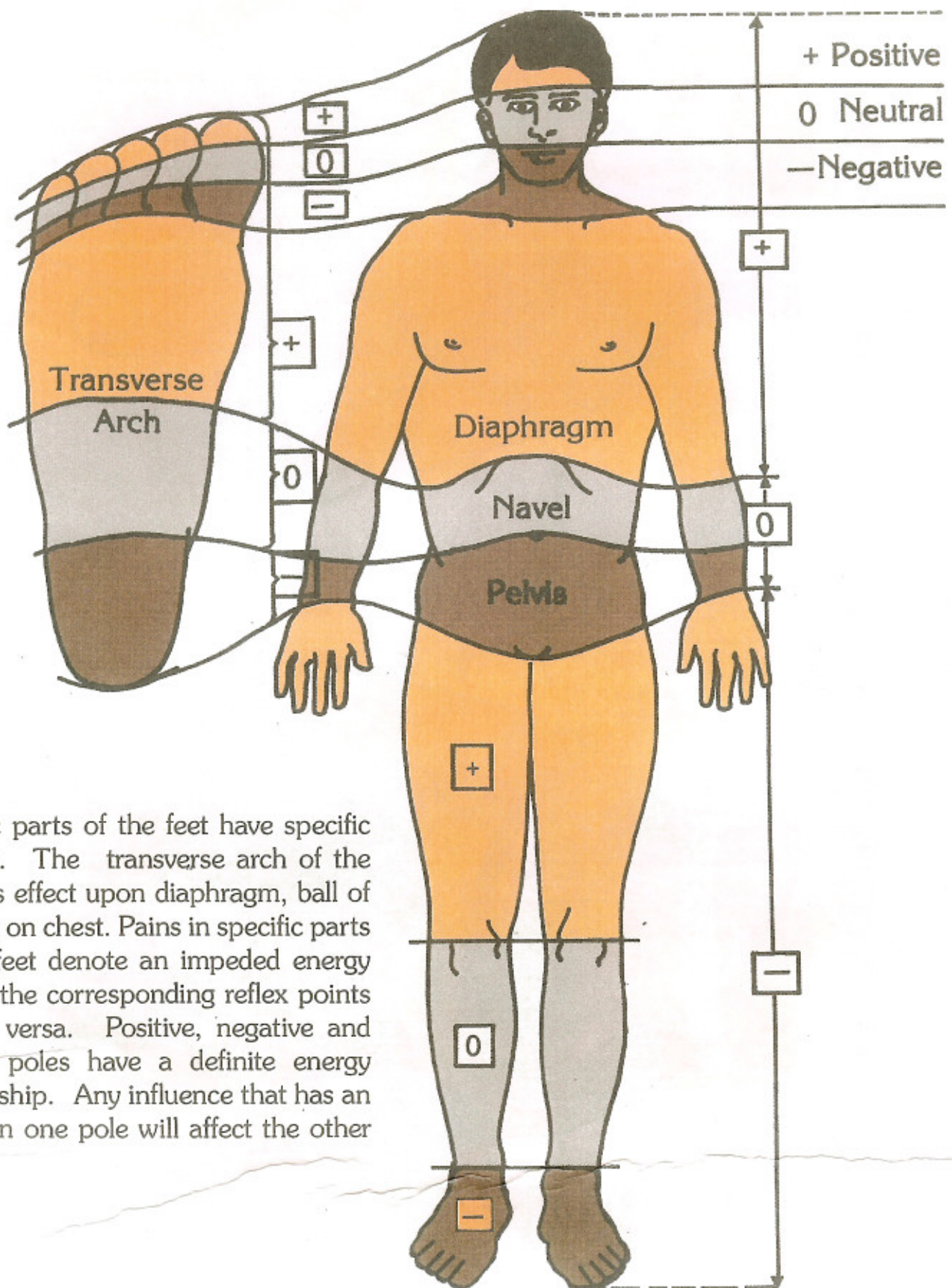


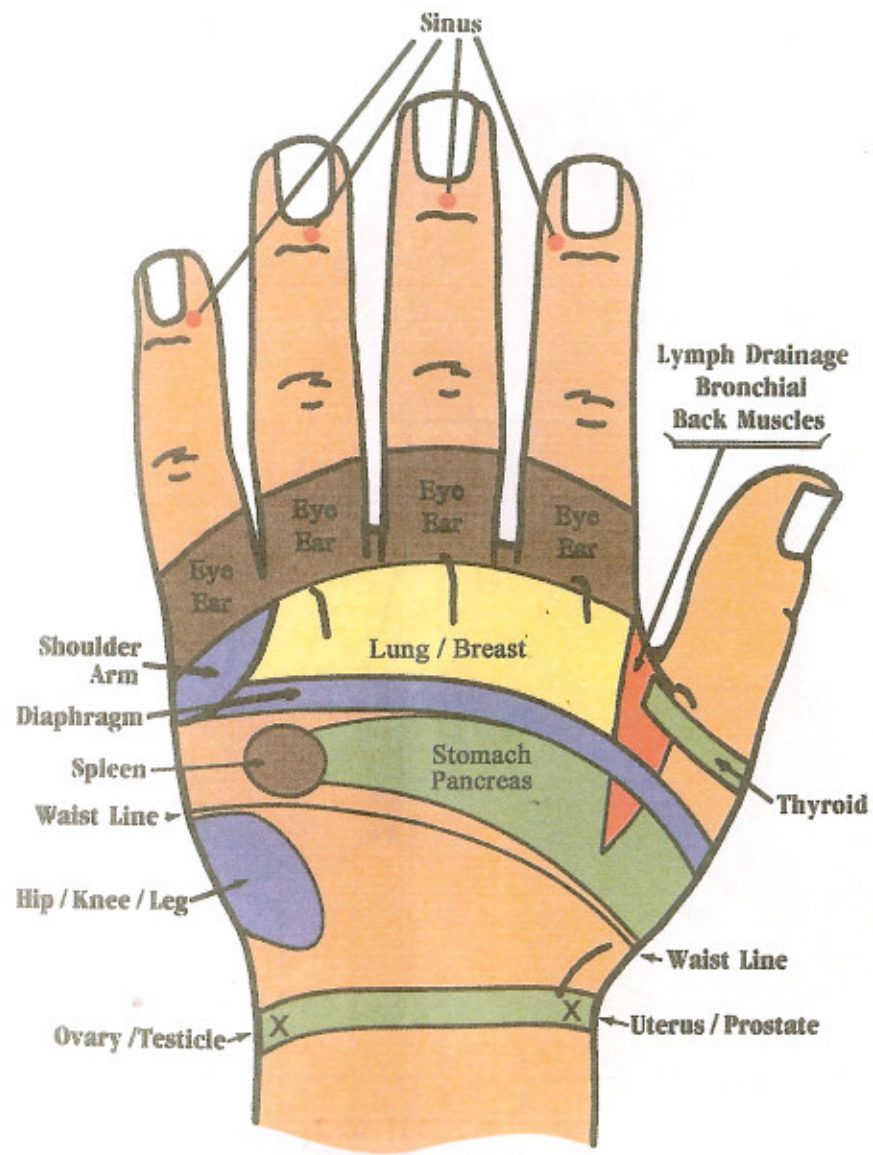
# FACIAL REFLEX POINTS



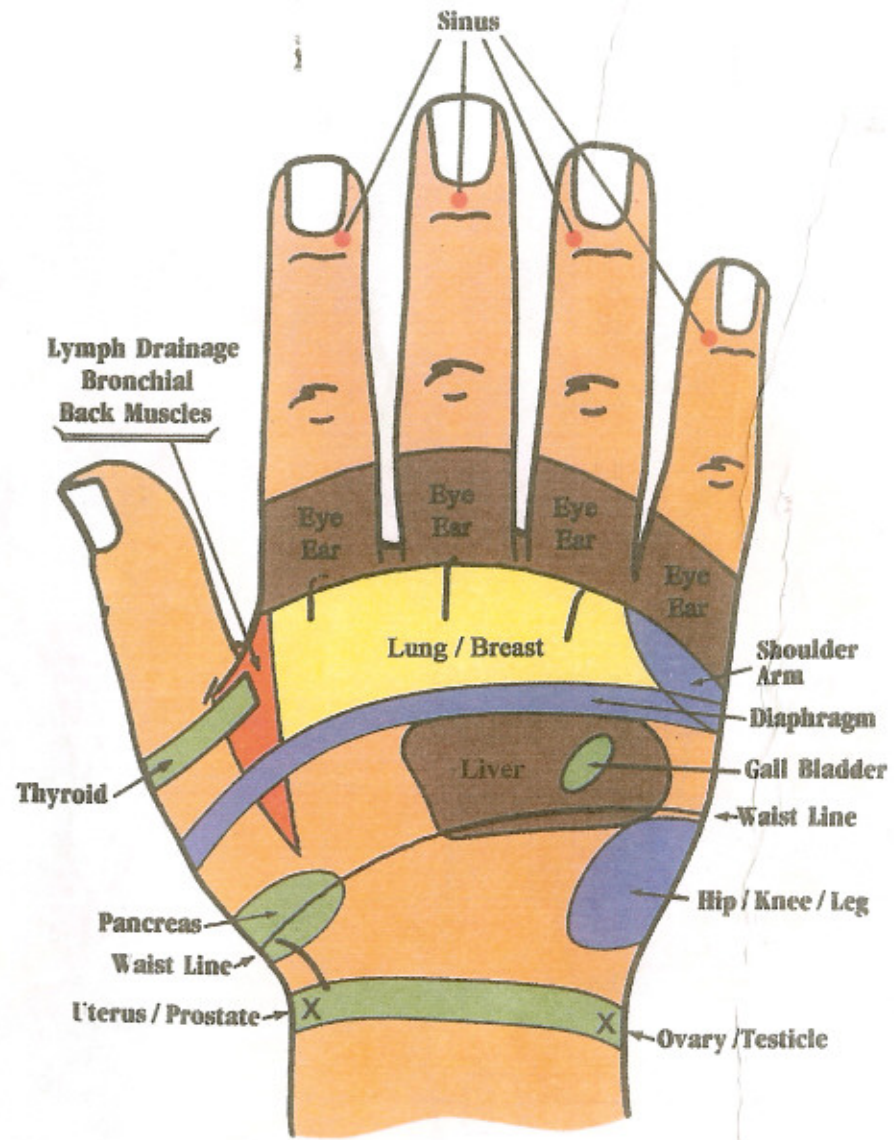
## REGIONAL ENERGY RELATIONSHIP



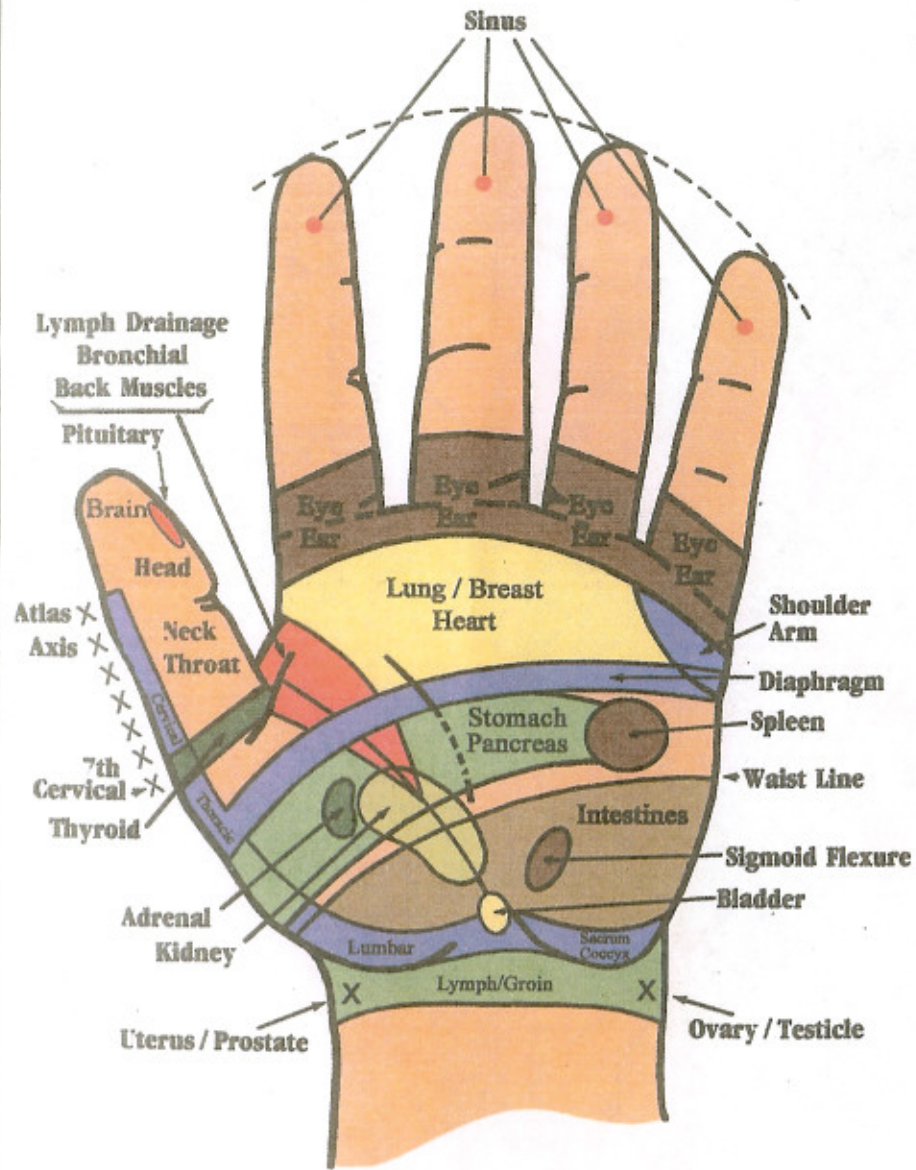
Specific parts of the feet have specific reflexes. The transverse arch of the foot has effect upon diaphragm, ball of the foot on chest. Pains in specific parts of the feet denote an impeded energy flow in the corresponding reflex points & vice versa. Positive, negative and neutral poles have a definite energy relationship. Any influence that has an effect on one pole will affect the other two.



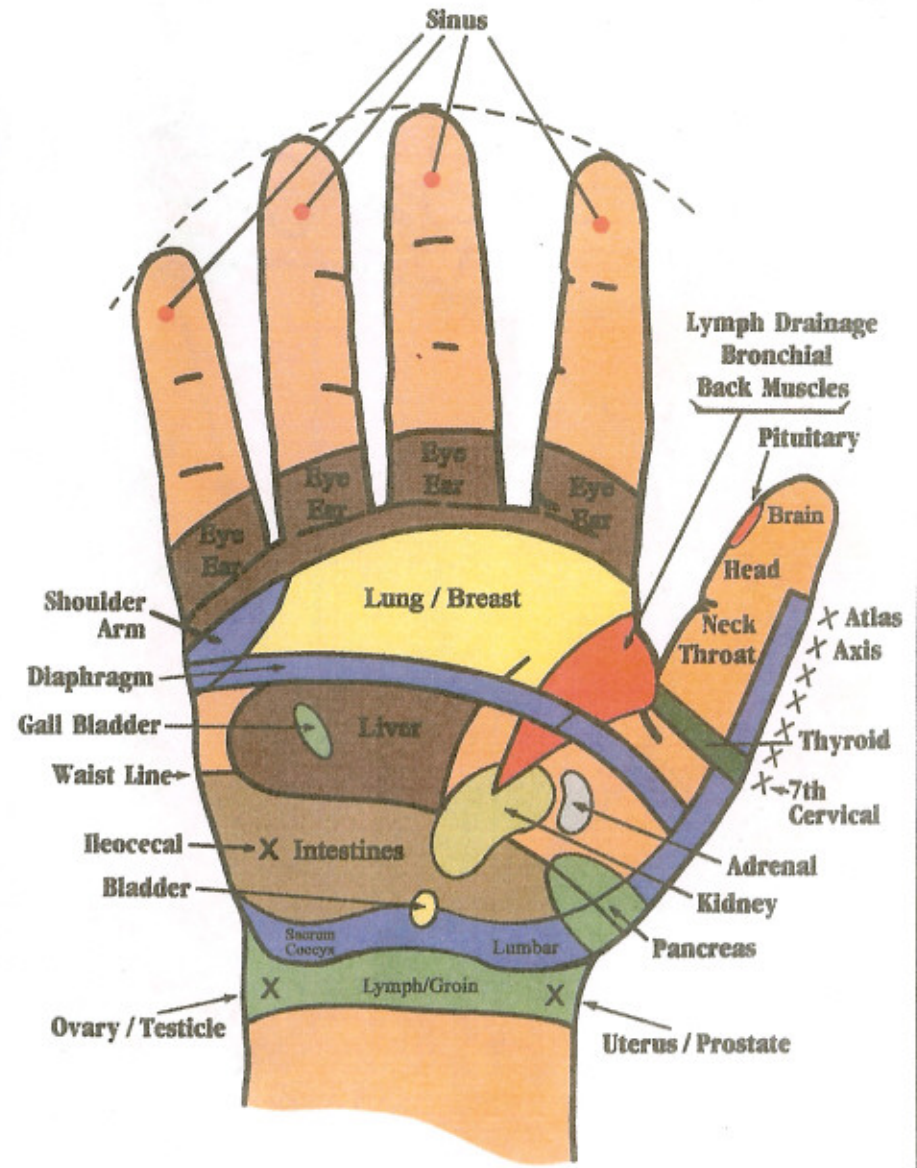
**Left Hand Down**



**Right Hand Down**



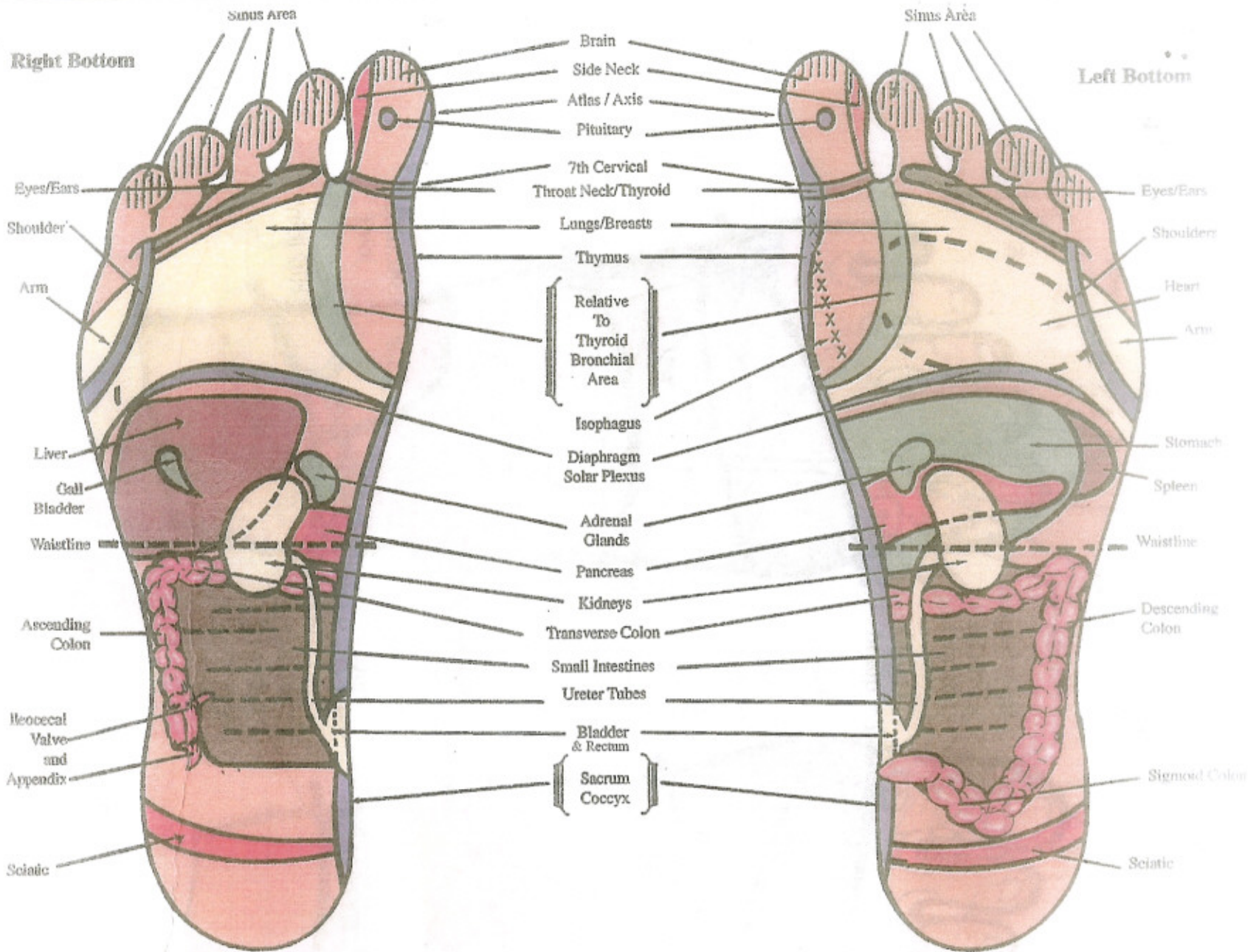
**Left Palm Up**



**Right Palm Up**

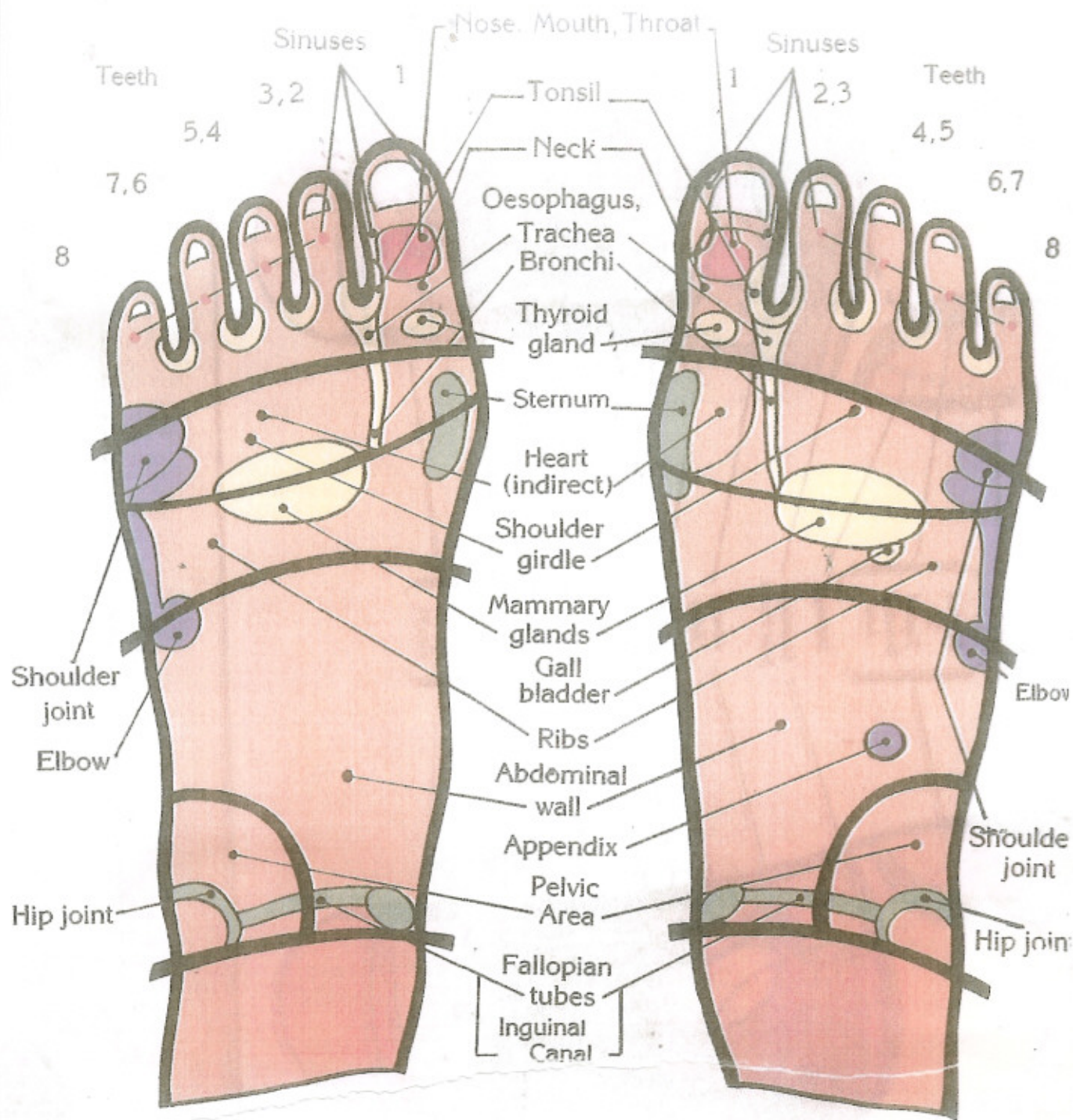
Right Bottom

Left Bottom



THE GREAT WORKS OF THE 19TH CENTURY

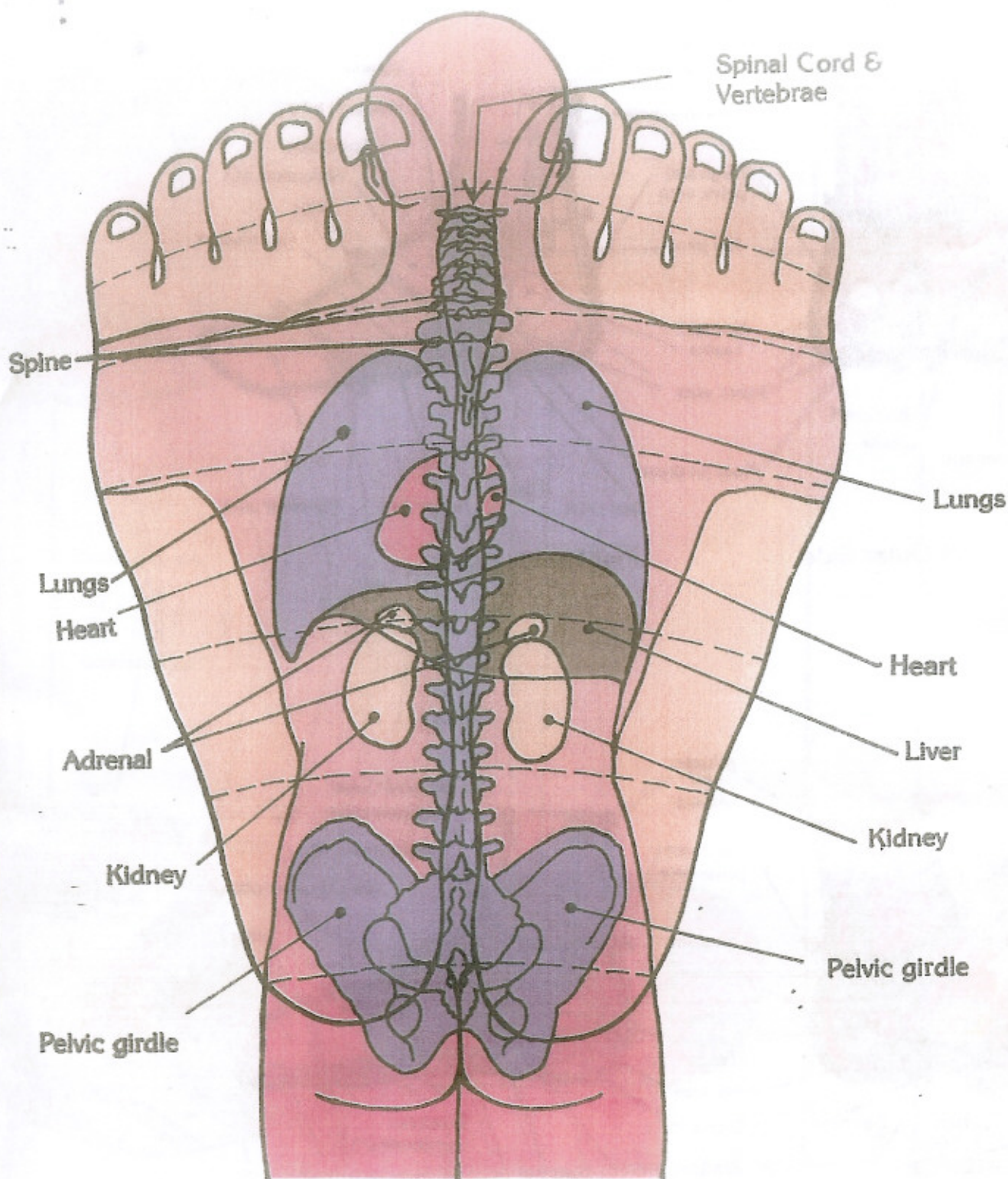
# REFLEX ZONES OF THE DORSUM



Left dorsum

Right dorsum

## RELATIONSHIP OF THE FEET TO THE SPINE & INTERNAL ORGANS



The dotted lines denote the relationship of the back of the feet to the spine and the internal organs

REFLEX ZONES IN THE OUTER INNER SIDES OF THE FEET

